

The AQUIKO Standard Penstock range is engineered and manufactured in the UK using the latest precision techniques to ensure long-lasting, reliable performance. Constructed with high-grade stainless steel 316 and robust HDPE, these penstocks are designed for a service life of up to 50 years*, offering a durable solution for diverse water flow management needs. Our design meets the stringent leakage standards of BS7775, providing peace of mind through enhanced leak resistance.

The compact, space-efficient frame of each penstock is tailored for ease of installation in confined areas, maximizing adaptability across various sites. Furthermore, our Standard Penstock range is fully compatible with AQUIKO's ancillary products, making it simple to integrate into larger flow control systems. Available in sizes ranging from 100mm to 1,000mm, the AQUIKO Standard Penstock range combines quality and versatility to meet your project's requirements with precision.

6MwC PRESSURE RATING*

LIGHTWEIGHT & ROBUST

ANCILLARY PACKAGE AVAILABLE



Why Stainless Steel 316?

AQUIKO uses stainless steel 316 for our penstocks to provide **superior resistance to corrosion**, especially in environments with high moisture, salt, and chemical exposure. Unlike stainless steel 304, the marine-grade 316 alloy includes molybdenum, enhancing its resilience against pitting and crevice corrosion. This increased durability makes it ideal for **long-lasting, low-maintenance** water flow control products. Choosing stainless steel 316 means investing in **reliability and performance**, even in demanding conditions..

Why HDPE?

AQUIKO's use of High-Density Polyethylene (HDPE) for our flap valves delivers critical advantages over traditional cast iron. HDPE's **exceptional corrosion resistance** ensures durability across a range of water environments, eliminating the need for frequent maintenance. Unlike cast iron, HDPE is **lightweight**, reducing both installation time and handling costs. Its flexibility under stress makes it **highly resilient to impact**, minimizing damage risks in the long term. Opting for HDPE means choosing a **sustainable, efficient, and cost-effective** material designed for **reliable** water flow management.

AQUIKO Standard Penstock: Quality, durability, and compact design for every project.



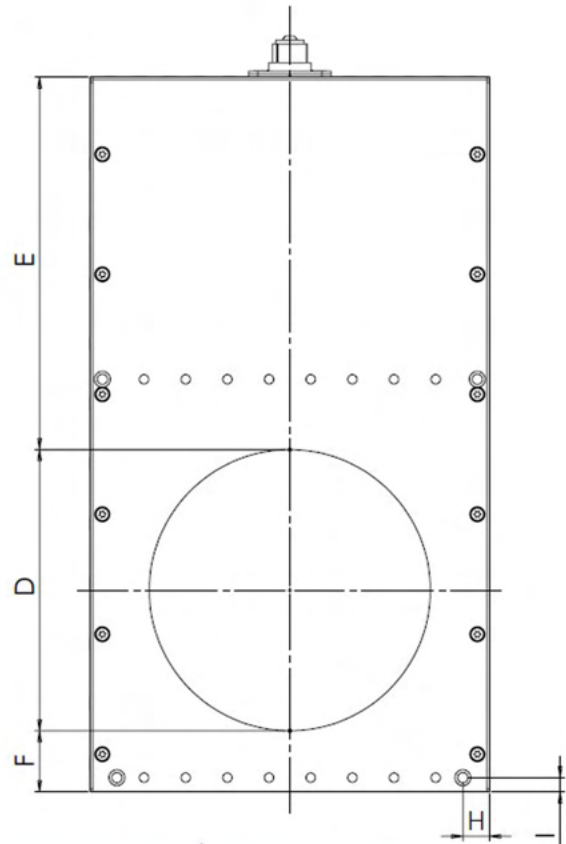
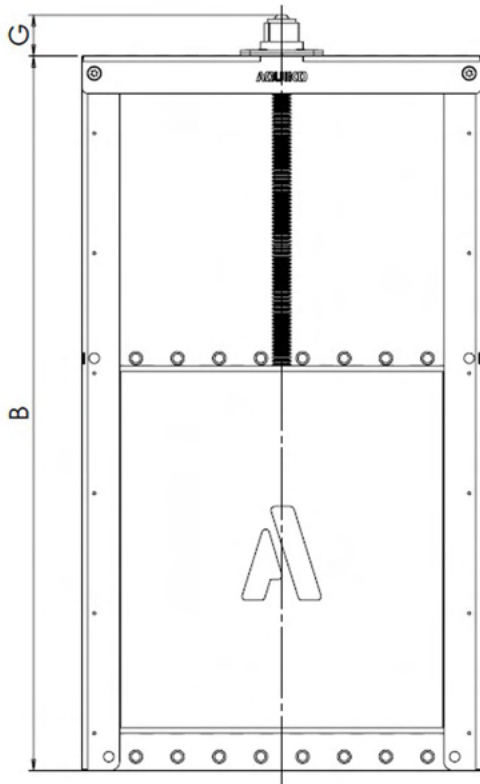
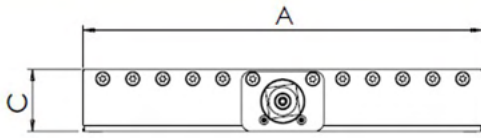
Manufactured in the UK

☎ 01777 819734

✉ info@aquiko.co.uk

🌐 www.aquiko.co.uk

Trading as Aquatic Control Engineering Ltd



Diameter	A	B	C	D	E	F	G	H	I	Turns	Pressure (MwC)			Weight (KG.)
											On Seating	Off Seating	Off Seating (without Stiffeners)	
100	226	363	66	100	198	65	44	15	29	31	6	6	-	7
150	276	463	66	150	248	65	44	15	29	44	6	6	-	10
200	326	563	66	200	298	65	44	15	29	56	6	6	-	13
250	376	663	66	250	348	65	44	15	29	69	6	6	-	16
300	426	763	66	300	398	65	44	15	29	81	6	6	-	19
400	526	963	66	400	498	65	44	15	29	106	4	4	-	28
500	626	1197	72	500	632	65	44	15	29	131	3	3	-	40
600	726	1401	82	600	736	65	44	15	29	157	3	3	-	58
700	838	1556	128	700	796	60	57	20	30	182	6	6	6	68
800	954	1756	133	800	896	60	57	20	42	207	6	6	5.5	95
900	1078	1956	138	900	996	60	57	20	54	232	6	6	5	115
1000	1178	2156	153	1000	1096	60	57	20	54	257	6	6	4.5	140



Manufactured in the UK

☎ 01777 819734

✉ info@aquiko.co.uk

🌐 www.aquiko.co.uk

Trading as Aquatic Control Engineering Ltd