



LONG OPERATING LIFE

SELF-CLEANSING FUNCTION

LOW TORQUE - EASY ACTIVATION

AQUIKO Inline Penstock is designed with full through-flow and a self-cleansing function for impurities to ensure total closing of the valve plate. The top of the valve can be removed for inspections. Lipped O-ring seals to steel plate can be changed in larger valves.

The AQUIKO Inline Penstock valve series has a long operating life, can be connected to piping using mechanical or electrofusion fittings, flanges, or butt-welded in open terrain. The AQUIKO Inline Penstock has a non-rising stem and is operated manually via a hand wheel. Low torque ensures easy valve activation. AQUIKO Inline Penstock can be incorporated in the pipeline in and outside manhole systems, with stem extensions and protective pipes in HDPE for build-up that pass through the manhole cover. The valve is suitable for installation in the ground without protection because its chamber is made of corrosion-free materials.

The AQUIKO Inline Penstock series is supplied as two standard versions: DN100-600 and DN700-1200

*Areas of use:* Surface water, effluent, industrial water and in the fish-farming and agricultural industries.

Variety of actuation options are available ie. manual, electric, pneumatic or hydraulic.

## Materials

Valve body: HDPE 500

Valve knife: Stainless Steel EN 1.440, EN 1.4462

Spindle: EN 1.4462

Spindle nut: Zinc-free Bronze

Valve Gasket: EPDM / VITON

Top Gasket: EPDM

Bearing: Nylon

Seat ring: NBR

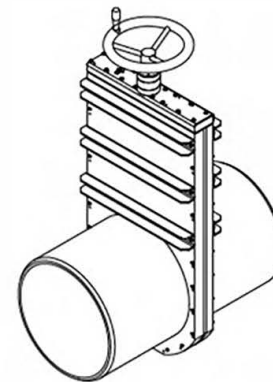
## Technical Data

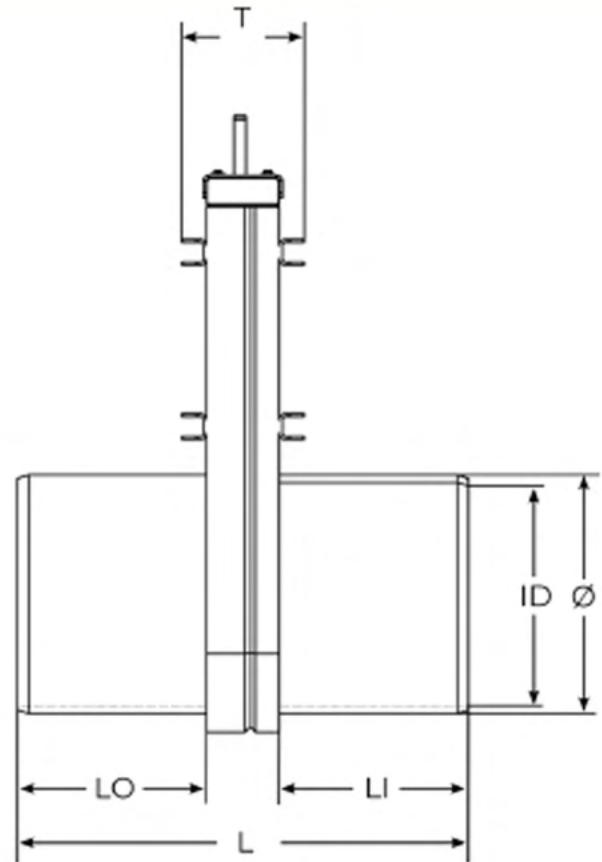
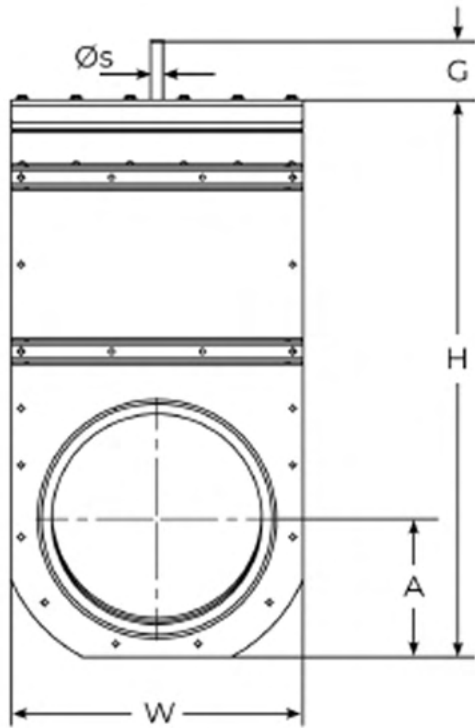
On- seating pressure.

Max working pressure: DN 100-300 - 6 (4) bar

DN 400-600 - 2 bar

Temperature: -50°C - +80°C.





DN	$\varnothing$	ID	W	H	A	G	$\varnothing_s$	L	LO	LI	T	kg	bar	Pipe
100	110	96.8	206	382	99	250	16	376	178	198	162	10	4	SDR17
125	125	110.2	220	414	110	250	16	376	178	198	162	11	4	SDR17
150	160	141	250	480	122	250	16	396	188	208	162	14	4	SDR17
200	200	176.2	285	539	138	250	16	396	188	208	162	19	4	SDR17
250	250	220.4	330	636	158	250	16	596	288	308	162	26	4	SDR17
300	315	277.6	386	735	182	250	16	596	288	308	162	37	4	SDR17
400	400	369.4	486	925	228	250	18	796	388	408	164	56	2	SDR23
450	450	415.6	545	1030	259	250	18	796	388	408	164	67	2	SDR23
500	500	461.8	595	1087	273	250	18	796	393	403	218	89	2	SDR23
560	560	517.2	630	1256	330	250	25	996	493	503	228	146	2	SDR23
600	630	581.8	719	1350	342	250	25	1006	498	508	228	148	2	SDR23